

## USEFUL NUMBERS & CONTACTS

<b>Badminton Group</b>	<b>Fran Pugh</b>	<b>673429</b>
<b>Carpet Bowls</b>	<b>Brian Wilson</b>	<b>673043</b>
<b>St Mary's Parish Church</b>	<b>Reverend Helen Savage</b>	<b>676852</b>
<b>St Elizabeth's Catholic Church</b>	<b>Father Jenish</b>	<b>673248</b>
<b>Commemoration Hall</b>	<b>Chairman: Ros Doonan</b>	<b>673173</b>
	<b>Bookings: Stella Douglas</b>	<b>673001</b>
<b>Community Trust</b>		
<b>County Councillor</b>	<b>Colin Horncastle</b>	<b>618259</b>
<b>Dial-A-Ride</b>	<b>A.D.A.P.T.</b>	<b>600599</b>
<b>Film Club</b>	<b>Jean and Michael Elphick</b>	<b>673443</b>
<b>Friends of Slaley School</b>	<b>Andrea Foster</b>	<b>634865</b>
<b>Hexham Hospital</b>		<b>0344 811 8111</b>
<b>Ladycross Nature Reserve</b>	<b>Joan Jewitt</b>	<b>673245</b>
<b>Leek Club</b>	<b>David Innes</b>	<b>673845</b>
	<b>Pat Wilson</b>	<b>673388</b>
<b>Local History Group</b>	<b>Ian Hancock</b>	<b>673502</b>
<b>Mobile Hairdresser</b>	<b>Linda Johnston</b>	<b>673196</b>
<b>Northumberland CC</b>	<b>Report faulty Streetlights/Potholes</b>	<b>0345 6006400</b>
<b>Parish Council</b>	<b>Clerk: Pat Wilson</b>	<b>673388</b>
<b>Post Office Van</b>	<b>Martin Nichol, Stocksfield Post Office</b>	<b>01661 842110</b>
<b>Police</b>	<b>For non-emergency calls</b>	<b>please call 101</b>
<b>Rose &amp; Crown Pub</b>		<b>673996</b>
	<b>Shop</b>	<b>673201</b>
<b>Slaley Shop</b>	<b>Sandra Innes</b>	<b>673845</b>
<b>Slaley First School</b>	<b>Head: Mrs. Hayward</b>	<b>673220</b>
<b>Slaley Notes in the Hexham Courant</b>	<b>Stella Douglas</b>	<b>673001</b>
<b>Slaley Parish Website</b>	<b>www.slaley.org.uk</b>	
<b>Slaley Show Society</b>	<b>Chairman: Marge Rastall</b>	<b>673547</b>
<b>Travellers Rest Pub</b>	<b>Ian and Darren</b>	<b>673231</b>
<b>Women's Institute</b>	<b>President: Margaret Rowell</b>	<b>673589</b>
	<b>Secretary: Hilary Porteus</b>	<b>673637</b>



# SLALEY NEWS

## March 2022



**The Film Club** is promoting two films this month. I hope that we might encourage anyone who has not experienced a film club night to come and join us. At the same time Michael and Jean Elphick have decided to step back from their role as organisers. For the last eighteen years they have resolutely organised a stream of diverse and entertaining films for our enjoyment and, not to forget, some memorable suppers. To you, Michael and Jean. our heartfelt thanks.

They leave a big hole in the organisation and Michael has suggested that we try to split the responsibility into sections such as selecting & booking films, setting up the Hall, taking money, projection and payments & records. If anyone would like to take on any of these roles please step forward.

### The Queen's Jubilee

The Parish Council has circulated a letter to all the groups in the village to try to coordinate any relevant activities that are being planned. They highlight the fact that the County Council has a £70,000 fund to aid the celebrations. Contact, Pat Wilson, the Clerk to the Parish Council (673388) for more information and please keep the editors of the Slaley News details of upcoming events.

## The Slaley Parish Wander Sunday June 12<sup>th</sup> 2022

Would you consider opening your garden to the public on Sunday June 12th? If yes join 13 gardeners already committed to this wonderful fundraising event. Let either Rosaleen or Pat know on 673173 or 673388 Want more details? the next meeting is Tuesday March 8th, at 6.30 p.m. by ZOOM.

Editors: Jim Bailey 673352 [baileyjim128@gmail.com](mailto:baileyjim128@gmail.com)

Fiona McKendrick: 673281 [fionamckendrick@googlemail.com](mailto:fionamckendrick@googlemail.com)

## Carpet Bowls in the Commemoration Hall

Next practice night - Tues 8th March

I hope you have been enjoying the curling at the Winter Olympics. Carpet Bowls, a similar game without the ice and medals, is played on Tuesday nights at 7.30 pm and you are very welcome to join us at the village hall, or contact me for further information on 079 146 93 199. It is open to all ages – we have players from the age of 12 years right through to some who have lost count!

We have played two games this year, one a home match against the Shire, who are our neighbours and they beat us by at least 20 points and we are looking forward to the rematch! The second was at Snods Edge, where we had some great hospitality and competitive matches and we managed to come back and win through by 30 points in the end.

The camaraderie in the bowling community has been lovely, helping us all bounce back following these last 24 months – it has been great to get back together, laugh, smile, move and be tested with team work and skill in matches. Our thanks to all the committee at the Commemoration Hall, particularly Stella, Pat and Ian who have worked with us, providing the wonderful facilities to train and bring the communities together in these times.

Matches next up away against Corbridge on 1<sup>st</sup> March and Riding Mill on the 10<sup>th</sup> March. Next practice night is 8th March and again you are very welcome to join us.  
Karl Becket 079 146 93 199

### Travellers Rest



Come and join us on the second Thursday in the month  
Between 3pm – 5pm at The Travellers Rest  
All crafts welcome  
Come along and enjoy a natter.  
Contact Darren 01434 673231

### Knit and Natter

**World Earth Day. Advance notice!** Friday April 22<sup>nd</sup> Slaley Commemoration Hall, 4 – 7 p.m. Watch out for “Just One Thing” event, hosted by Slaley, Healey & Hexhamshire Community Environment Group.

Early flowers are very important signalling the beginning of spring. On the 1<sup>st</sup> of February, I was surprised by two *Iris reticulata Clairette*, bright and fully open, along with swelling pink winter cherry buds. Carpets of snowdrops, aconites and Tommasina crocuses follow. These are a regular but welcome late winter pleasure, along with early hellebores in the wild garden. Hellebores are easy and long flowering preferring shade. I leave the leaves on but cut the flower heads before the seeds form.



*Hellebore*



*Sarcococca hookeriana and Pieris Japonica*

Winter box, *Sarcococca hookeriana*, has been scenting the garden all winter and the plant has been vigorous enough to allow lots of stems to be cut and brought into the house. The petals are bright with a pink base. When I look at them up close I realise that the ‘petals’ are really thick stamens with an antler of pollen at the end. I put some in a vase with *Pieris Japonica* already starting to open. Witch hazel, *Hemerocallis x intermedia pallida*, has also been open all winter, quite extraordinary with the snow and wind. Their petals are like delicate little straps.

We’re building up to the most fleeting of spring pleasures, the cherry blossom extravaganza. In our case it is wild cherries, where our whole field of view is filled with blossom, then the petals fall and litter the ground white and pink; old age fine tunes the mind to these immersive pleasures all happening before the main leaf burst.

I tend to move any overcrowded bulbs (‘in the green’ as recommended for snowdrops) and before they are fully open because otherwise I lose the urge when the flowers are long gone. This is all right for early carpeting bulbs like Tommasina crocuses, *Chionodoxa*, *Glory of the Snow*, *scilla* and *muscaria*, Grape hyacinth that can easily get overcrowded.

I notice that my *iris Clairette*, *Painted Lady*, and the beautiful pale blue and yellow *Iris Katharine Hodgkin*, all seem to have died out (I didn’t try to move these). Planting deep enough is a good strategy. I certainly have good drainage, but they may have dried out in the summer when the leaves should be feeding the bulbs.

Even though the weather has been fierce on and off, the leaves of *Arum italicum pictum* have been perfectly gorgeous and have made two big clumps. The seed heads are bright in the early summer when it is hard to notice them. I have them in the flower border but the seed heads would be appreciated more down in the wild area after the spring bulbs die down.



## Marmalade competition results from The Slaley Community Shop

Judge David Jewitt stumbled back a few steps with an astonished look on his face when he was told that, along with fellow judge Robin Chute, his wife Vicky Hutchinson had won 1<sup>st</sup>

prize for the Marmalade with the most Mmmm factor! 'But she's never made it before, she only did it to go in for this competition!' he said.

It must be stressed considering the result, that anonymity and secrecy surrounding the judging was of the highest order. Marmalade was spooned on numbered saucers and entrant details remained unopened throughout the competition until after the winners were chosen. With 11 entries for the Mmmm class and just 1 for the Magnificent it was decided by the stewards to judge as one class and to choose the most Magnificent winner from all the entries. Thus, Hexhamshire's Hilary Kristensen became our second 1<sup>st</sup> prize winner.

Judge Robin Chute was amazed to see how much variety there was in the consistency and colours of the 12 entries which uses a very similar recipe. Entries were mainly marked down for being either too runny or too dense and the peel being too hard. Both judges were in firm agreement that Vicky's entry had the right taste and texture with a nice soft peel. 'Just right' they both said.

Vicky's and Hilary's recipes will be available to pick up from the shop so we can learn their secrets. Interestingly Vicky's recipe comes from her grandmother's cookbook which contains half the sugar of a modern recipe. Hilary says she paid particular attention to the peel, cutting it very finely; she's more familiar with making jams, not marmalade, so again this was new territory for her. Both have won a bottle of Prosecco and become this year's title holders. This has got to be an annual event for sure!

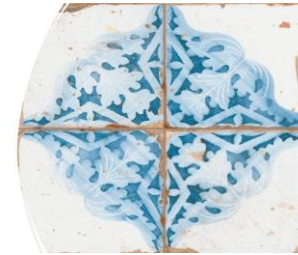
### Slaley WI meeting 9<sup>th</sup> March 2022 7.30 pm onwards The Travellers Rest



After celebrating an unbelievable 99<sup>th</sup> birthday in February with some low key but immensely enjoyable games, cake and a glass of fizz, Slaley WI are breaking a little with tradition. This month's meeting, well, more of a get together, is at the Travellers Rest and heralds a new era in the build up to next year's BIG birthday. We'll be in a chatty mood as we peruse our new calendar of events and discuss plans of how we intend to continue and thrive, not only until next year (to have another celebration!) but for many years to come. The get together/meeting is open, not only to members, but to anyone who has ever contemplated joining us. We're moving on and upwards and would love to welcome some new members aboard. Come and see what we're about? (Thankyou to Ian and Darren)

Slaley and  
Hexhamshire  
Welcome

[slaleywelcomes@gmail.com](mailto:slaleywelcomes@gmail.com)



We see and hear daily, the continuing horror and misery of over 82.4 million people, forcibly displaced, due to persecution, conflict, violence or human rights violations.

**26.4 million are refugees. Afghanistan is experiencing an unprecedented humanitarian crisis. Every day is an**

### emergency.

Just a few weeks ago over 50 Slaley and Hexhamshire residents gave an outstanding positive response to an idea, an ambitious plan, driven by community spirit at its best...to become a Community Sponsor group and create a welcome and support group for a refugee family for an initial 2-year period.

Urban and rural resettlements are happening right now, all over the UK. Families and individuals are specially selected by the United Nations High Commissioner for Refugees (UNHCR); their needs and requirements must 'match' what an area and locality have to offer.

This isn't just going to happen. We must prove our worth by raising at least £12,000 and provide accommodation, practical help and mentoring services. But it will happen!

- ▶ We've got the beginnings of a skilled 'task force' to make it work
- ▶ We've started our crucial search for accommodation and need help
- ▶ We've started a Just Giving page:  
[www.justgiving.com/fundraising/slaley-and-the-shire-welcomes](http://www.justgiving.com/fundraising/slaley-and-the-shire-welcomes)
- ▶ We've got a partner and lead sponsor - Citizens UK (part of the UK Government Community Sponsorship Scheme launched by the Home Office).

### Can we persuade you to join us?

**Next meeting** 6pm Thursday 10<sup>th</sup> March Commemoration Hall Slaley  
Project Lead: Mark Jennings Tel: 07449 879487

**Fitness sessions** every Monday evening in the Commemoration Hall.

6.00 – 7.00 pm. First session free then then £5 / session thereafter.

For further information contact Ferguson Fitness 07500056654

**Email [fergusonfitness02@gmail.com](mailto:fergusonfitness02@gmail.com)**

## Church News

**Weekly Sunday services** at Slaley (every week) are at 10.45am. Holy Communion is celebrated on the first Sunday of every month. All are welcome – always!

The next Evensong at Healey will be on Sunday 27 March at 5pm.

Sunday services continue to be streamed on Facebook and You Tube as well as weekly

'thought for the day' each Wednesday. To find them please just click on our Facebook page:

<https://www.facebook.com/moorlandgroup/> and via You Tube via our website: [www.moorland-group.org.uk](http://www.moorland-group.org.uk)

## Ecumenical Study Group

We'll begin a new series of Friday studies for Lent on Friday 11 March at 10.30am at Middle Grange (one week later than week announced last month!). It's based on the words of the prophet Isaiah that the church has used to help us understand better who Jesus is – the so-called 'suffering servant' passages. Please come and join us.

## Surely the very best way to spend a Tuesday lunchtime?

Definitely not a 'churchy' event – just a chance to share a simple meal together, once a week, from 15 March through to 12 April in the Commemoration Hall at 12 noon. There'll be a bit of food for thought literature on the tables – but no obligation to engage with it – talking to each other comes first! There's no cost we simply ask you to make a donation with any profits going to the **Slaley Welcomes** project.

## Helen's thought for the month.

I realise that my ringing of the church bell almost every morning may not be everyone's cup of tea, especially as my timekeeping is highly irregular, but other folk have very kindly told me how much they like to hear it.

Why I persist, is to make the simple point that someone is praying for the needs of the community and the wider world. Whatever you think about prayer and its efficacy, I hope it's good to know that if you're anxious, depressed or ill, someone cares, even if we can't always find the right words to tell you or to help in practical ways.

And if you hear the bell on the wind, why not stop for just a moment too and join us in remembering not only those in Slaley who need support, but the massive needs of the world at such a time of tension and anxiety?

Ring the bell at St Mary's will not bring world peace, but if enough people want to make a difference, you never know where it might end.

## Bobby Johnston and Ross Adamson

In the space of just 24 hours last month our communities lost two quite remarkable characters – Ross Adamson and Bobby Johnston. Both proud Northumbrians, Bobby was born in Corbridge, Ross in Whitley Bay (but only so that his mother had access to help). True countrymen to the tips of their fingers they spent a lifetime grafting a living in these hills most notably at West Minsteracres (Ross) and at High Fotherley (Bobby). Both were heads of large farming families.

Both were pillars of the Church and Chapel. Ross served as Churchwarden of St John's Healey for 50 years, Bobby was the lynchpin of Slaley Methodist Church. They were both men of inspirational faith and commitment but another thing unites them – an utterly infectious sense of humour. In Ross's case, especially, some of his elaborate shaggy-dog tales should only be repeated with extreme caution, but they were always told with a twinkle in his eye. Bobby's humour was gentler – a reflection of his personality: 6 foot four inches of kindness.

That gentleness and humour touched us all and went deep. Men of their strength of character and resilience are the bedrock of community and without them ours is diminished. We send our love to Connie and Chris who have supported them through tragedy and hope. Great men often have great partners – in that respect too Ross and Bobby were united.

## Slaley weather report – wind and more wind

I started last month's report by commenting on how dry January had been. The total precipitation for January was only 20.1mm, with a staggering 22 days which were completely dry.

This month so far has been very different, despite a dry start, with only 8 dry days. Total precipitation to date, 23<sup>rd</sup> February, is 49mm. That's hardly "February Fill Dyke" in spite of the sight of water draining off the fields in recent days. Total precipitation is still low, compared to 2021 when we had 80.5mm. However, our river levels have been high due to much higher precipitation on the fells further west which feed our river systems.

The pressure chart has been very up and down through much of the month. Pressure variation has been almost daily, unlike the settled conditions we had in January. These almost daily variations are due to the speed and frequency of the depressions which have plagued us. Unfortunately, we have a strong jet stream feeding them in our direction. As we know, although we have been affected by the named storms, we've hardly had any breaks from strong winds. Only this morning we had a gust of Force 8 (gale) and the forecast is for stronger winds to come today.

The forecasters are holding out the hope that the jet will move north. Let's hope so.

*Olwen Savage*

## News from the Rose and Crown

The Rose and Crown has always been a popular place to spend time, whether it's in the bar, the restaurant or the B&B, for those from further afield. All get great reviews but in the last few days the accommodation has been singled out for two special awards. It's won both a Booking.com Traveller Review Award 2022 and a 2021 KAYAK Travel Award.



The restaurant remains ever popular and if you've not visited for a while perhaps the special menus that will be on offer for St Patrick's Day and Mothering Sunday might tempt you in.



Further details will be posted on the events page of our website at [www.roseandcrownsaley.co.uk](http://www.roseandcrownsaley.co.uk).

And what of the bar? In recent months this has been going through something of a refurbishment. New soft furnishings and fires give it a cosy feel, which professionally taken photographs, capturing its atmosphere and characters will supplement when they are hung later this month.

Such a vibrant and widely recognised community asset requires a dedicated and friendly team to keep it going. Would you like to be part of it? Right now **we're looking to recruit a new deputy manager** that could work at least 24 hours a week. If you'd like more details, or just a friendly chat about the role, why not start the ball rolling by contacting Tracey via [traceyrosecrowncrown@outlook.com](mailto:traceyrosecrowncrown@outlook.com). There's also the opportunity to share some of your time with us. We're always on the lookout for volunteers, so if fancy the odd shift behind the bar or taking on one of the many other activities that keep the pub at the heart of our community, please don't hesitate to contact Ian Stevens at [ian.stevens686@gmail.com](mailto:ian.stevens686@gmail.com).

Being at the very heart of the community is sadly beginning to take its toll on one of our key assets, the car park. Used by many, not just patrons, could we ask that if you do use it, that you treat it with care and respect. Resurfacing is a costly business and in the current economic climate is something we would like to avoid.



### Fire & Dough Pizza Van Wednesday 23<sup>rd</sup> March

The Commemoration Hall Car park from 5 p.m. – 7.00pm

## SCH 200 winning numbers

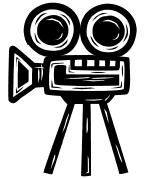
January 2022 No 1  
February 2022 No 50



## SLALEY FILM CLUB

March 18<sup>th</sup>

### Goodbye Christopher Robin (PG)



With its bittersweet interweaving of fact and fantasy, youthful innocence and adult trauma this tale of the creation of a children's classic could have been called "Saving Mr Milne".

It skips nimbly between light and dark, war and peace, like a young boy finding his way through an English wood, albeit one drenched with shafts of sugary, Spielbergian light.

### March 25<sup>th</sup> "Limbo"

"An offbeat observation of the refugee experience. On a fictional remote Scottish island, a group of new arrivals await the results of their asylum claims. Among them is Omar, a young Syrian musician burdened by the weight of his grandfather's oud, which he has carried all the way from his home."

This is an additional film showing in conjunction with the Tynedale film festival. Both shows are in the Commemoration Hall starting at 7.30 pm.

As usual BYO dink and a sharing platter for supper

### Badminton Club and Exercise to Music

Both clubs continue their regular sessions as usual

Contributions for April edition by Wednesday 23<sup>rd</sup> March or earlier please.

**First Aid Training, Slayey Commemoration Hall,** Thursday April 7th 9 a.m.- 4 p.m. £50 per person. The Hall is being paid for by Slayey Parish Council and the training by a North East Ambulance service instructor is also being subsidised by Slayey PC. If you are concerned about using a defibrillator then sign up for the training it is all part of emergency First Aid. Age is no barrier to knowledge. Five places left - if £50 is more than you can afford at present please do not let that stop you - Special prices for school age teenagers. Tel Pat 01434 673388 to reserve your place.



## Ladycross Nature Reserve

*Working with People for Nature – Working with Nature for People*

### To Patagonia and Beyond: In search of South America's Big Cats with Keith Buchanan

**Wednesday April 6th 2022 7 p.m. Slaley Commemoration Hall**



Wildlife and environmental specialist Keith Buchanan with a fascinating talk about Patagonia, the big cats of South America and the unique challenges of the Patagonian environment. Keith's experience and extensive travels have left him with an enormous range of knowledge and insight into the situations faced by animals, plants and their habitats across the world.

Admission £5 – All proceeds towards new facilities at the Reserve

## Slaley, Healey & Minsteracres Local History Group

**March Monday 28<sup>th</sup>**

### Everything Ice Cream by Zoe Philipson



Around the world, different cultures have developed unique versions of ice cream, suiting the product to local tastes and preferences. Australians and New Zealanders are among the leading ice cream consumers in the world, eating 18 litres and 20 litres each year respectively, behind the United States where people eat 23 litres each per year.

According to a report from September 2009, 14 million adults in the United Kingdom buy ice cream as a treat.

The origins of frozen desserts are obscure although several accounts exist about their history. The earliest ice cream-like foods I have heard of was as far back as 550 BCE in Persia. Roman Emperor Nero had ice collected from the Apennine Mountains to produce the first sorbet mixed with honey and wine. Charles 1 of England (1625-1649) was reportedly so impressed by the "frozen snow" that he offered money to his ice cream maker to keep the formula secret, so that ice cream could be a royal prerogative.

Recipes for flavoured ices appear in France during 1674 and England in 1718 and in North America from 1744. Ice cream became popular throughout the world in the second half of the 20<sup>th</sup> century after cheap refrigeration became common.

Zoe and her father Alan, are better known in the North-East as Tyne Valley Ices. Zoe will tell us something of her work with the family-owned company and I would suspect that one or two funny stories are inevitable when dealing with ice creams and the public. Zoe was a finalist for a national award for people who excel in the ice-cream industry. She was announced as the winner at the Ice Cream Alliance dinner at Harrogate in February 2022.

**Hexham Arts Society** Tuesday March 8th at 2.00pm Hexham Mart Function Room.

**Big Ben – Tim Redmond**

## Selected diary dates

Mondays – Exercise to music.  
Evening keep fit session

Tuesdays – Bowls nights  
Lunch & thought from March 15<sup>th</sup> Midday in Hall

Wednesdays – Badminton,

Fridays - Ecumenical Study Group. From March 11<sup>th</sup>

Tuesday 01/03/22 Bowls match

Tuesday 08/03/22 Hexham Arts Society 2.00 pm

Wednesday 09/03/22 W.I meeting (Travellers Rest)

Thursday 10/03/22 - Knit and Natter at the Travellers Rest  
Bowls match

Thursday 10/03/22 Slaley Welcome Project meeting. 6.00 pm

Friday 18/02/22 Film Club - Goodbye Christopher Robin

Wednesday 23/03/22 Fire & Dough Pizza Van

Friday 25/03/22 Film Club – Limbo

Monday 28/03/22 - History Club

Wednesday 06/04/22 Ladycross (Big Cats)

Thursday 07/04/22 First Aid Training