



## Cakes And Bakes For Christmas!

Special Slaley Wi 'Pop-Up' Cake Stall  
At Slaley Community Shop

Saturday 9th and Sunday 10th Dec  
9am - 12Pm

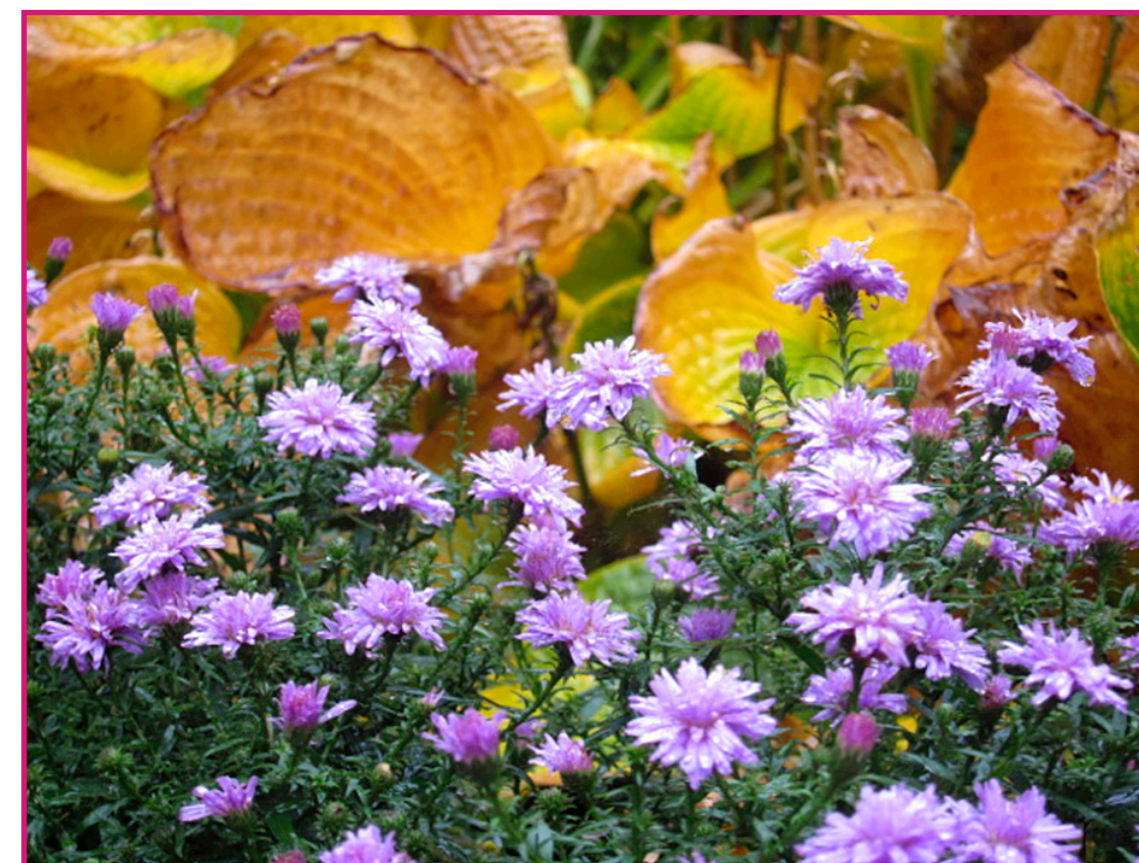
All Monies Raised Will Go Towards  
The Slaley Community Noticeboard  
To Celebrate Our 100th Birthday  
Year!



## SLALEY NEWS DECEMBER 2023 JANUARY 2024



We are delighted to be able to publish our cover pages this time in colour!  
Although it's still too expensive to do so for the remaining pages ...  
So here to start with is a lovely display of Hostas and Asters from Karen  
Melvin:



And there are more from Karen overleaf.



Christmas songs and carols  
around the tree



Join us to sing Christmas songs and  
carols

Slaley Commemoration Hall  
Saturday 23<sup>rd</sup> of December 2023

3 - 5 p.m.

Small charge for refreshments

Mulled Wine. Hot Chocolate.

Sweet Mince Pies

Come and help us spread some Christmas Cheer!

Watch local Posters for any last-minute changes to this event

This combined edition has the usual updates from the Parish Council, Church services, the Women's Institute, and events in the Commemoration Hall.  
Also news from the Friends of Slaley School, Ladycross and Slaley Shop, and the history of the Carpet Bowls Club!

**Contributions for the February edition by January 23<sup>rd</sup> or earlier, please!**

Send text by email to [slaleynews@icloud.com](mailto:slaleynews@icloud.com), but for the moment send images to [michael@elphicks.myzen.co.uk](mailto:michael@elphicks.myzen.co.uk)

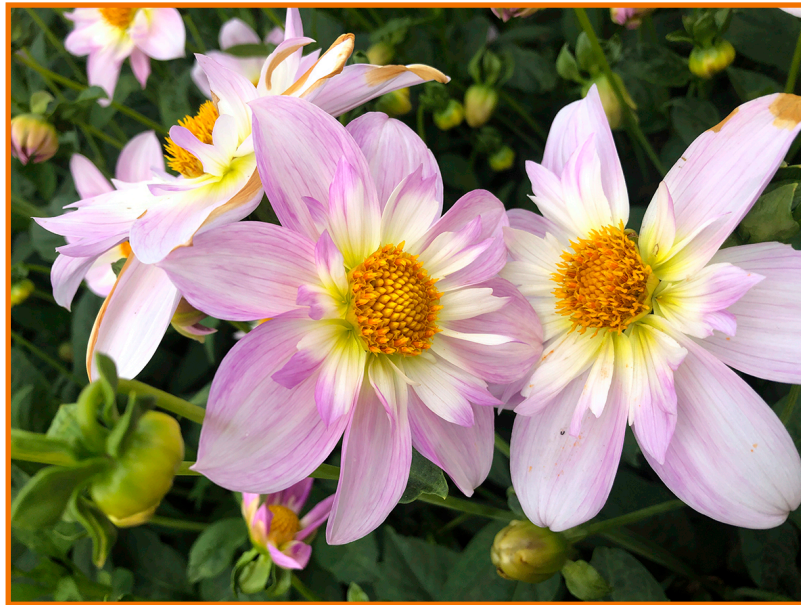
And for the Facebook posts, send to Catherine Lincoln  
[catherinereaston@icloud.com](mailto:catherinereaston@icloud.com), telephone 0791 812 0125



## December & January gardening column-

Karen Melvin

To cut back or not to cut back - there are divided opinions all around on this one. I hate to see the garden flattened so early in the season and actually I find the look of decaying plant forms very interesting. Not all are lovely though. Recent very wet weather has turned the leaves on hostas to slime, so these need to come off before they rot the crowns. Obvious things to leave in the herbaceous border are biennials with seeds to shed like honesty, evening primrose, foxgloves, euphorbia lathyrus (the anti-mole euphorbia) and annual poppies still to shed their seeds. Teasels are rather grand and their seeds are useful to goldfinches in winter. If the structure of the seedhead or dry stem of a plant is fine and statuesque, I am loath to cut it. Some plants have sent up a second flush of flowers, no doubt confused by climate change, rhododendrons, an oriental poppy, a morinia, all a bonus.



Dahlia Teesbrooke Audrey



Leek seed-head

Gardening mirrors society and we have to be careful not to be stuck with old ideas that are destructive to the eco-system. The classic traditional garden is about firm control and display. I love my sometimes exotic and highly bred hybrids, and my highly designed borders, but I can also imagine a world with fewer birds and bees. We have certainly noticed the loss of butterflies and bird species compared to years ago when we started gardening here. In autumn the butterflies clustered on a few select plants: buddleia, Japanese anemones, sedums, and single dahlias. The butterflies' choice was dramatic; so I am sticking to mostly single dahlias now despite all the wonders at Halls of Heddou.

We are lucky because even though we are surrounded by monoculture forestry and farm grassland there are still many rough unmanaged edges



WI Glass crafting with Phillipa Lee



Willow in 4 colours from Vicky Pepys



### **Slaley Women's Institute**

Yes, our Noticeboard idea is going ahead and hopes to be in place at the shop in the Spring! We still need to raise a little bit more so it's all our hands to the wooden spoon and the mixing bowl to create some festive bakes; we do hope you will be able to support us.

At the time of writing many of us are foraging for foliage for the 6th of December meeting where talented 'amateur' florist Fiona McKendrick will inspire us all to make a Christmas wreath. Those who are not able to forage, don't worry, there will be an abundance of material from those who have overdone it! But do bring any additional decorations or ribbons you would like to add.... And looking forward to our January 10th meeting...we'll be playing table tennis!

Anyone who is a keen gardener and organised with a 2024 calendar already, can highlight Friday 26th April.... It's the Harrogate Spring Flower Show WI trip organised for us by the Moorland Group. We'll tell everyone about it at the next meeting.

Our last meeting in November was a fascinating craft night with Hexham based artist Phillipa Lee who specialises in fused glass. Taking many of us by surprise, with a table crammed full of at least 10 types of glass in a myriad of colours we proceeded to decorate a plain glass triangle and square, which in festive colours became a Christmas decoration, or an abstract light catcher or a coaster. At times it felt like decorating a cake or glazing a pot, as the creations were to be fired at a high temperature, at the time of writing we await the results... and if asked we now understand about the 3 grades of frit, confetti, stringers, ribbons and dichroitic glass (used to coat spacecraft!). A thoroughly enjoyable evening.

Merry Christmas to everyone, we'll be celebrating on Weds 13th Dec at The Travellers Rest and hope that all WI members are able to join in. and a very Happy New Year to all.

### **An additional notification ...Willow available!**

Any keen basket makers around or anyone needing sturdy plant support/pea stick willow for 2024 gardens? Willow in 4 grades/colours are available on a 'pick your own' basis from Vicky Pepys, Slaley WI committee member in January in exchange for donations to the Community Noticeboard fund, please contact her on 07802 572326 to make an appointment.

where wild species can prosper. On a global scale, the worlds habitats including the magnificent rain forests are being destroyed. A local expert friend who advises the UN says he thinks the Amazon has become so fragmented that it is on the edge of collapse, the Amazon! - so huge and yet devastated. We are all feeling the effects on the climate or soon will, bit by bit. My way of coping with this horror is to garden in a balanced way that supports the eco-system. I create a sense of place, from which I can learn about the various processes in the natural world. I am trying to evolve from nice and tidy to functional and diverse with a habitat for both nature and our recreation, and of course, food. Mini meadows, compost heaps, ponds, single flowers for nectar are all good for nature. And we come back to tidiness - trying to sanitise natural decay, rather than seeing all those stems as useful protection, trapping air for warmth and feeding the soil. Healing nature is about letting things happen.

### **The Traveller's Rest**

*Everyone here at the Traveller's would like to wish you all a happy and joyous Christmas and New Year.*

As you are probably well aware, Fridays at the Traveller's is street food time and December & January are looking good, with some returning favourites and some promising new vendors.

In December

- 1st Tyne Thai.
- 8th Bay Tree.
- 15th Parmo-Rama.
- 22nd Meat stack.
- 29th Smashed and loaded.

And for January:

- 5th Parmo-Rama.
- 12th Bay Tree.
- 19th Zenobia.
- 26th Smashed and loaded.

All our vendors can be found on Facebook and Instagram so you can check out their menu's and reviews.

We look forward to seeing you soon. Don't forget, we are now serving brilliant afternoon teas and gift vouchers are available for that special someone.

### **Ladycross Nature Reserve**

There will be an illustrated talk by Martin Davison, "Birds of Prey". Martin is Forest North's ornithologist based at Kielder. He has given talks for us on a number of occasions and they have been very popular. This talk is a new one. Please watch local press and Slaley website for the date for this talk.

## Church Services

### Christmas services at St Mary's, Slaley:

- Village Carol Service, 5.00pm on Saturday 23rd December
  - Sunday morning service at 11.15am on December 3, 10, 17, and 31.
- There will be no services on Sunday 24th December, Christmas Eve
- Christmas Day Family Communion 10.30am.

### St John's, Healey:

- Holy Communion at 5pm on Sunday 10 December
- Healey Carol Service at 2.30pm on Saturday 23 December.

### A Christmas Message from Canon David Kennedy

*Yet with the woes of sin and strife  
the world has suffered long;  
beneath the angel-strain have rolled  
two thousand years of wrong;  
and man, at war with man, hears not  
the love-song which they bring:  
O hush the noise, ye men of strife  
and hear the angels sing.*

The well-loved words of the 19th century carol *It came upon the midnight clear*. Edward Sears, the author, was captivated by the song of the angels to the Bethlehem shepherds:

*Glory to God in the highest,  
and on earth peace, goodwill to all people.*

We sing the carol this year with special intensity, as the long and weary war in Ukraine continues and the Holy Land is ripped apart by appalling and heart-breaking violence. Often, it seems as if the noise of bomb and bullet drown out the angels' love-song of peace.

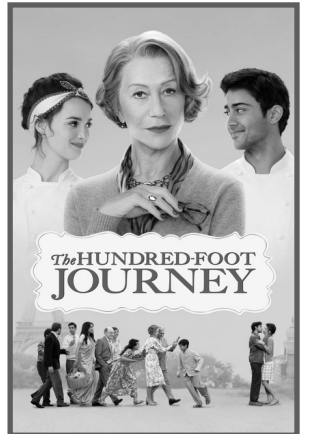
And yet, at Christmas we celebrate the coming to earth of Jesus Christ, the Prince of Peace. His love-song to the earth invites us to be at peace with God, with each other and within ourselves. His life shows that love is stronger than hate, goodness is stronger than evil, hope is stronger than despair, and truth is stronger than lies.

When we sing together of love and peace, the love that was born at Christmas, the love that makes the person of Jesus Christ so attractive and compelling to so many, then we drown out the shrill voices of hatred and war. And one day, love and peace will fill the earth when Christ is revealed in glory. We invite you to come and join in the song of peace through our worship this Christmas.

Peace be with you and all people of goodwill this Christmas – David.

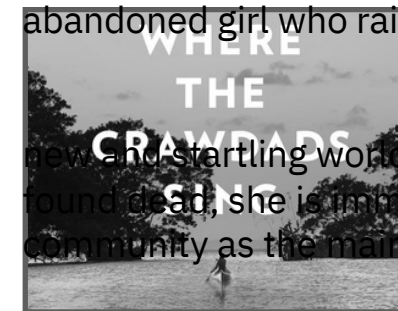
### December 15th, 2023 "The Hundred Foot Journey" (PG)

Starring Helen Mirren this is a tale of a battle in a French village between two restaurants that are directly across the street from each other: a new Indian restaurant owned by an Indian emigrant family and an established French restaurant with a Michelin star owned by a French woman..



### January 19th, 2024 "Where the Crawdads Sing" (15)

This tells the story of Kya, an abandoned girl who raised herself to adulthood in the dangerous marshlands of North Carolina. Drawn to two young men from town, Kya opens herself to a new and startling world, but when one of them is found dead, she is immediately cast by the community as the main suspect. As the case unfolds, it threatens to reveal the many secrets that lay within the marsh.



### Friends of Slaley School

Hi, I have recently become involved in FOSS and thought it would be a good opportunity to reintroduce ourselves. As Friends of Slaley School, we raise funds to support our school to give our children the best time we can. We organise regular events, to raise vital funds to enrich the learning experience for our children. Slaley First School is such a wonderful nurturing school, FOSS provide financial support to enhance this.

We are currently a small group made up of parents who have children in the school but are always open to more members from the wider Slaley community, so please feel free to get in touch if you'd like to find out more. We'd love to make our FOSS events as inclusive as possible and are keen to take on board any ideas/suggestions any of you may have.

On 8th December between 6-9pm, we are holding our Christmas shopping night which we'd love to invite you all along to-the more the merrier! We will be drawing our popular Christmas hamper raffle at the event, tickets are available at: <https://www.justgiving.com/page/suzanne-osborne-1700567572952?newPage=true>

**Good luck!**

*Best wishes and Merry Christmas,  
Holly and the Friends of Slaley School*

and feel free to contact a member of the Parish Council should you need any help in working your through the associated forms.

### **Parish Council Meetings**

Parish Council Meetings are open to the public. The next meeting is to be held on Monday 11th December at 19:30, in Slaley Commemoration Hall. The one following that will be on 8th January 2024 (same time, same place). All members of the Parish are welcome and the agendas can be found at [www.slaley.org.uk/spc-meetings-and-minutes-2022-3](http://www.slaley.org.uk/spc-meetings-and-minutes-2022-3), seven days in advance of each meeting.

### **Fancy becoming a Parish Councillor?**

Your Parish Council are still looking for a sixth Councillor to join its ranks. If you would like to support our community you may care to consider filling it. To find out more please email [slaleypc@gmail.com](mailto:slaleypc@gmail.com).

**Who to contact:** Should you have any concerns or issues relating to our Parish, please contact the Parish Council at [slaleypc@gmail.com](mailto:slaleypc@gmail.com), or Ian Stevens, the Chairman on 07395 566997.

**FixMyStreet:** Whilst Parish Councillors are more than happy to report infrastructure issues you become aware of to the County Council, you may prefer to report them yourself as soon as you see them (rather than wait to speak to a Councillor). You can do that via Northumberland County Council's new online service called FixMyStreet. You can find out more about it at **[fix.northumberland.gov.uk](http://fix.northumberland.gov.uk)**. Filing a report is quick and easy and those monitoring them are very responsive.

And finally ...

***Slaley Parish Councillors and County Councillor Colin Horncastle would like to wish all residents of Slaley Parish a Merry Christmas, Happy New Year and a Joyful Holiday Season!***

### **Slaley Film Shows**

Our 20th season of films continues with these two for December and January. Cheaper in December, as supper will be "Bring Your Own Plate to Share" ... only £5 a head!

### **Slaley Shop**

The Slaley Community Shop held its AGM on the 27th September 2023. The shop continues to turn over a profit and we were able to pay shareholders a 3% dividend again this year. The Community fund has contributed to a variety of projects including a new marquee for the Slaley Show, raffle prizes, printing of Slaley News and the Bird Food for the Ladycross nature reserve.

I hope you will all have noticed our new look! A big shout out to Dodwells who have done an amazing job with the rendering which should last now for many years to come.

In the lead up to Christmas please pop in as we have a great range of local produce which would make good gifts and we have a good stock of Christmas Cards from Tynedale Hospice. The WI will be holding a pop up cake stall on the 9th and 10th of December and we are promised some delicious mince pies.

If you are interested in helping out at the shop please get in touch. Volunteering is proven to be good for your wellbeing and it is a great way to keep in touch with people in the village. [slaleyshopinfo@gmail.com](mailto:slaleyshopinfo@gmail.com)

### **The Commemoration Hall**

*See the back cover for posters advertising a Shopping Night, Cakes And Bakes For Christmas, Carols and Snack & Chat!*

### **Badminton**

Slaley Badminton Club will continue as usual on Wednesdays at 9.30 am through December and January except for Wed 27th December. We welcome new members to join us. Please contact Fran Pugh on 673429 or by email: [fmpugh@btinternet.com](mailto:fmpugh@btinternet.com)

The Local history Group have no meeting in December, but in January we have this:

### **Slaley, Healey & Minsteracres Local History Group,**

"Woodland of Slaley & Hexham over the last 400 years", by Ian Hancock

Monday 22nd January 2024

7.30 p.m. Slaley Commemoration Hall.

£4 adults 50p anyone in full time education.

For more information contact Pat Wilson 673388, or by email: [pat.wilson28@outlook.com](mailto:pat.wilson28@outlook.com)

The whist session for December is on Thursday December 14th, and for January is Thursday January 11th 2024

The SCH 200 November winner was number 34

### **Warnings!**

The growing number of lost-property at Slaley Commemoration Hall is becoming a problem! Please collect your sweater, summer-weight green jacket, etc. from the grey roll cabinet inside the front door. Otherwise they will be recycled at Slaley Shop.

There is also currently a problem with the dishwasher at the Hall, but we hope this will be remedied soon.

### **Commemoration Hall Facebook page**

This is for those of you who are organising an event, or a weekly class, at the Commemoration Hall. The Hall has its own Facebook page - if you want to publicise your event/class, please send a photo and a few words to me, so I can put them up on the Slaley Commemoration Hall Facebook page.

Catherine Lincoln (catherinereaston@icloud.com, telephone 0791 812 0125)

### **Slaley Carpet Bowls**

The Slaley Carpet Bowls Club was formed some 36 years ago in 1983. In May of that year the idea was considered and after three successful bowling sessions, using carpets and bowls borrowed from the Northumberland Carpet Bowling Association the decision was taken to go ahead and form a club in September 1983.

A carpet and bowls were acquired thanks to a grant and loan from Slaley and Tynedale Parish councils. Members paid a joining fee of £10 (a pint cost about 60p in those days!) and the loan was soon repaid.

The carpets and bowls were firstly borrowed and then later bought second hand. In those early days there were large numbers of members and club nights would see 20-30 people attending to have a good nights 'craic' and bowling.

Many of the village families had someone who played and some of the founding members still play to this day.

The club has always welcomed anyone who wants to join in, current memories are of 6 young ones aged about 14 coming in one night and asking if they could have a go. Over the following years these youngsters became stars and team skippers and all the local villages, asked how we had managed to do it? If only we knew!! Except to say we are a very friendly bunch, don't have too many rules and fuss, and welcome everyone, no matter what age or ability.

The club has embraced modern technology replacing a chalked up game scoreboard with a number flipper!!! Even better we appear on [Slaley.org](http://Slaley.org) the village website, very modern!!

This year we have a new carpet thanks to a grant from Northumberland County Council .The only concern we now have is 'what can we blame our poor bowling on'!! Seriously though we are most grateful to the Hall committee for helping us progress a grant application and so very grateful to NCC for their grant.

After a rest from bowling in the summer we started again in September. With a couple of new members and some old members returning club night numbers have been good. We hope to welcome more new bowlers. It's a great way to socialise and meet other folk from the village.

We have hosted bowls sessions with the Whitley Chapel Young Farmers and next year hope to welcome FOSS and WI , these happenings are always great fun .

In our matches so far this year we have had some very close encounters with victory but seem to keep losing!!

The club meets every Tuesday at 7:30pm until about 9:30pm , there is always a break for a cup of tea. If we have a match on a Tuesday then the club night is not on. We publish match nights in the Slaley News or you can ring Karl on 676 878 to find out if club night is on.

We will have a rest over Christmas so no club night bowls on 18th and we start again on the 9th January

*Looking forward to seeing you!!*

### **Slaley Parish Council**

The last Parish Council meeting was held on Wednesday 13th November. All Parish Councillors were present and County Councillor Colin Horncastle was also in attendance. Minutes of that meeting will be available at [www.slaley.org.uk/spc-meetings-and-minutes-2022-3](http://www.slaley.org.uk/spc-meetings-and-minutes-2022-3) from 12th December. Of note to emerge from it however were the following:

- First Aid Training – The Parish Council have traditionally subsidised annual first aid training for members of the community. This year however Councillors agreed to cover the full cost of the course for all those attending if they were members of the Parish. For more details about the training which is scheduled for 23rd January 2024 go to [www.slaley.org.uk](http://www.slaley.org.uk).
- Parish Council Grants – In line with the Parish Councils new Grant Policy, Councillors reviewed two applications for grants. Whilst both were for worthy causes Councillors were only able to fully support one – that being from the Northumberland National Park Mountain Rescue Team.
- The next window for grant applications is February 2024. If you are an individual or member of an organisation which you think could benefit from a grant please take a look at the Grant Policy at <https://www.slaley.org.uk>