

## USEFUL NUMBERS AND CONTACTS

Badminton Group	Fran Pugh	673429
Carpet Bowls	Jason & Jeannie Abdelnoor	673651
St Mary's Parish Church	Reverend Helen Savage	676852
Slaley Methodist Church	Reverend David Goodall	603139
St Elizabeth's Catholic Church	Father Jeroen Hoogland	673248
Commemoration Hall	Chairman Ros Doonan Bookings Ann Wright	673173 673366
Community Trust	Chairman Norman Watson	673914
County Councillor	Colin Horncastle	618259
Craft Group	Brenda Hutchinson	673269
Dial –A-Ride	A.D.A.P.T	600599
Film Club	Jean and Michael Elphick	673443
Friends of Slaley School	Emma Turnbull	673317
Hexham Hospital	0344 811 8111	
Ladycross Nature Reserve	Joan Jewitt	673245
Leek Club	Malcolm Goodwin	673408
Local History Group	Pat Wilson Ian Hancock	673388 673502
Mobile Hairdresser	Linda Johnston	673196
Northumberland CC	Report faulty Streetlights/Potholes	03456006400
Parish Council	Chairman Robbie Hutchinson Clerk Pat Wilson	673107 673388
Police PC Sue Cockburn	For non emergency calls please ring 101	
Post Office Van	Martin Nichol Stocksfield Post Office	01661 842110
Rose & Crown Pub		673996
Slaley Shop		673201
Slaley First School	Head, Mrs Debbie Brett	673220
Slaley Notes in Hexham Courant	Stella Douglas Helen Savage	673001 676852
Slaley Parish Website	<a href="http://www.slaley.org.uk">www.slaley.org.uk</a>	
Slaley Show Society	Chairman, Marge Rastall Secretary, Catherine Lincoln	673547 676855
Slaley Red Squirrel Group	Margaret Bates	673461
Travellers Rest Pub	Ian and Darren	673231
Women's Institute	President Margaret Rowell Secretary Dorothy Bell	673589 676962



# SLALEY NEWS

## February 2018



**Contributions for March edition by Wednesday February 21<sup>st</sup>. please.**

It doesn't feel like two months since I sat down to produce a Slaley News. So much is going on in our small community at the moment and I would encourage everyone to try some of the activities that are regularly promoted in this publication. Try the film club, (you would be surprised by some of the films and can always be guaranteed an interesting supper) or the History Club. If you are more inclined to get fit there are badminton and exercise to Music classes and for those who just want a sociable time try carpet bowls, coffee mornings, craft afternoons and more. Failing that The Rose and Crown has several themed evenings on offer.

**Craft Group.** Meetings on Thursdays February 8<sup>th</sup> and February 22<sup>nd</sup> 2.00pm – 4.00pm in the Commemoration Hall. New "crafters" will always find a warm welcome, cup of tea and chat as well as encouragement to help finish any projects you may have. Further details from Brenda (673269)

### Dilston College Coffee Mornings

Every Tuesday in the Commemoration Hall 10.30 – 11.15. Please come and support us. **NB No coffee February 13<sup>th</sup>. Half term**

**Badminton Club.** Badminton continues on Wednesdays 9.30 am in the Commemoration Hall. New players are welcome to join us, come and have exercise and fun.

**Please note** that the badminton equipment is for everyone to use and we would encourage people to book the hall and play with their friends or families. For information contact Fran Pugh on 673429.

**Exercise to Music.** Exercise to Music classes continue on Monday mornings in Slaley Commemoration Hall. There will be one week off in February on 19<sup>th</sup> February. This is NOT the local half term date, so please make a note of this, I WILL be taking the classes on 12<sup>th</sup> February. Carol Ferguson 673575

Editors: Jim Bailey 673352 [baileyjim128@gmail.com](mailto:baileyjim128@gmail.com)  
Fiona McKendrick: 673281 [fionamckendrick@googlemail.com](mailto:fionamckendrick@googlemail.com)

## Dog mauled to death in Slaley!

That headline made many of you read on in disbelief. Had the headline been 5 sheep mauled to death by dog in Slaley it might not have had the same impact. 15,000 sheep were killed on farms by loose dogs in the last year. Closer to home, on my small farm in Slaley, 8 sheep and lambs were attacked and killed by dogs.

Spring and with it lambing time is round the corner, a footpath runs through the farm, we are pleased to see walkers enjoying our beautiful Northumberland. Most people are pleasant and respect our home, but some Dog walkers are affronted to be asked to put their dogs on a lead. We have signs throughout the farm, but regularly come across walkers with dogs off the lead. Sheep are very easily disturbed by dogs and suffer great anxiety when chased sometimes causing them to lose their unborn lambs or even die of shock.

So the advice from the legal advisors is:- "a walker is entitled to take a dog with them on a public right of way. However, that entitlement exists only in relation to the line of the path, and only if the dog is accompanying the walker. Therefore a dog, which is unaccompanied or which an owner allows to run around off the line of the path, commits trespass against the owner of the land.

Landowners are able to apply for the exclusion of dogs from fields where sheep are kept at lambing time, as long as the enclosure is smaller than 15 ha (37 acres).

If a walker does not comply with the restrictions on access and rules concerning dogs, then they have no entitlement to be on that land and are effectively a trespasser. The landowner can therefore ask that person to leave the land."

### Can a farmer shoot?

"There is a provision in the Protection of Livestock Act 1953 that allows the farmer to shoot a dog which attacks or chases his livestock. Where a field is home to sheep or other livestock, a dog must be on a lead or under close control."

*Please respect the safety of our livestock and enjoy the countryside with your dog on a lead.*

*Thank you.*

*Rebecca Wilson*

### Slaley Parish Council: - Notes from December/January Meetings

Following approval at the next meeting full minutes will be available at [www.slaley.org.uk](http://www.slaley.org.uk) or a printed copy can be seen by appointment with Pat Wilson, Parish Council Clerk Tel: 673388.

**County Councillor Report:** 2018/19 Highway Maintenance allocation for Slaley – carriageway repairs between Todburn and Blackburn plus Slaley village

**Tree pruning** on the Wooley road which had been scheduled for Autumn of 2017 with a one day road closure and completed by the end of November has not been done, County Councillor to determine what is happening with this.

**Ladycross:** The Nature Reserve invitation to the new activity room Christmas Shop event on 10/12/17 at the newly arrived container cabin unfortunately had to be cancelled at short notice due to a severe weather warning. An exciting event will be re-arranged when the warmer weather arrives.

**Slaley Mobile Post Van:** Due to various mishaps the mobile post office has missed a few sessions. The Parish Clerk has written to the Post Office Ltd stating the service was not acceptable, but as yet has had no reply.

**Damaged Highway Drains:** Damaged drains between Middle Dukesfield and Dukesfield Mill have been reported to Highways.

**Slaley Forest:** Emails have been received reporting damage to bridleways also of some user groups being aggressive towards the public when stopped and questioned about the legalities of where they are riding. It was decided that a request should be made to Northumbria Police for a police presence especially during holiday periods.

### Slaley, Healey & Minsteracres Local History Club

Slaley Commemoration Hall from 7.30 p.m. – 9 p.m.

admission £2 per adult or 50p for anyone in full time education

### Monday February 26th

#### Bog Hall to Hotel - By Pat Wilson

Where was Bog Hall? - Who lived there?

What did it look like?

Evidence – maps, photographs, census returns, records.

The Hunting Family - What they built?

The Gardens.

Changes - Photographs and Memories.

Deaths and Weddings.

Sold.

The Priestman Family - What they changed?

The Staff's Photographs and Memories.

Deaths.

Sold.

Plans for a £1.3m estate.

What happened to the Temple in the Japanese garden?

**A local history display will be available to look over after the Talk.**

For more information contact Pat Wilson 01434 673388, email:

[pat.wilson28@outlook.com](mailto:pat.wilson28@outlook.com)

Or Ian Hancock 01434 673502, email: [hancock@glenlodge.free-online.co.uk](mailto:hancock@glenlodge.free-online.co.uk)

## Slaley First School

2018 brings an exciting development to Slaley First School. We now have our own before and after school club, which are proving both popular and successful. Children, who attend Slaley First School are able to book a place at our before school club and enjoy a healthy breakfast followed by a range of activities to encourage a calm start to their school day. The breakfast menu is reported to have the 'wow' factor by the children who attend. The club starts at 7.30am, leaving plenty of time for parents to arrive at their place of work and experience an equally calm start to their working day!

The children have reported our after school club is 'fun, great and exciting'. After a hard day of school work they are able to make great use of our outdoor learning area. It is essential they bring wellies and waterproofs as they have access to water pumps, assault courses made of old tyres as well as helping with a bit of general garden maintenance - all of which they thoroughly enjoy! After working up an appetite, they are provided with a healthy snack prepared by our school cook. Having enjoyed all that fresh air and exercise what could be better than to sit down to some board games, art, crafts, reading or small world play creating a lovely opportunity to talk and share experiences.

Both clubs are planned to have a focus on emotional wellbeing, making sure our children are safe, happy and nurtured. They are run by highly experienced staff who are passionate about providing quality before and after school facilities at Slaley First School. Booking forms are available from the school office.

SFS continues to offer a broad and balanced curriculum for all our children. We are currently using P.E funding to purchase equipment which will develop the physical development of our children. This equipment is adding to our Outdoor Learning Area and is being enjoyed and used by the children in regular timetabled slots and as part of after school club activities. Children are involved in setting up ongoing projects, leaving work and equipment outside, therefore we would ask that anyone using the school grounds out of school hours is respectful of this and leaves work untouched. Thank you.

Wind in the Willows performed by the Image Theatre will be coming to Slaley First School courtesy of FoSS. This is an excellent interactive experience for the children and we look forward to seeing the children take on the role of Ratty and Mole!

The Slaley First School Craft Club would like to extend their thanks to Brenda Hutchinson and Margret Barron for their help and advice whilst making Christmas Bears. Small hands, small needles, elastic, thread and ten small children requires skill and patience. Thank you very much, the end results were beautiful. We hope to see both ladies again at Easter!

Next month's article will be written by our budding journalists, so watch this space to read about the children's thoughts as they give their version of life in our very busy school. In the meantime, please take a moment to look at our website which has regular updates of activities and events at school.

Mrs. O'Neill

Key Stage 1 Lead Teacher

### **SLALEY & HEXHAMSHIRE OIL BUYING GROUP.**

The deadlines for our February order will be :-

Orders to me by 13<sup>th</sup> Of February for delivery week commencing 19<sup>th</sup> February

Full details of our free not for profit service, please contact Neil Whatmough at [nbwhatmough@btinternet.com](mailto:nbwhatmough@btinternet.com) or on (01434) 676949

### **Slaley Carpet Bowls**

The first half of the season ended with 5 wins and 5 losses. The first game of January saw us lose to Riding Mill who bowled superbly and deserved their victory which they secured with on the last two ends. We don't like to lose but as ever it was a great night and we were chuffed for them!!. Now it will be a busy time for matches with challenging games against the best teams in our fixture list. Every week during February there will be matches but there are also club nights on 6th February and 13th February so if you fancy giving it a go do come along anytime after 7:30.

### **Slaley Community Shop Update**

We're deeply grateful to Dane Architectural Systems and more especially to the Hall family who have generously agreed to donate and fit a super new and much needed door to the shop. It will not only improve security but make the shop look even more inviting.

On which subject, if you've popped in recently, you may have noticed that not only do we now stock brilliant local cheeses from Birdoswald and the Northumberland Cheese Company, but our range of gourmet pies has expanded, we have a stunning range of local honeys, we have a new range of frozen food, including ready meals, but also (sound the trumpets), we stock an amazing selection of fare from the Northumberland Sausage Company. All of these things are in response to the customer survey we carried out in the autumn. Our wine range has expanded too. We very much hope you feel we're listening.

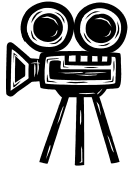
On a slightly less bright note, our superb flat (it really is very well done indeed) remains un-let. Do please spread the word. It will make a fine home for someone.

### **Slaley W.I.**

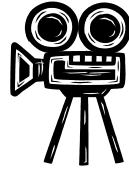
February 14th

Birthday Meeting "Wines with Helen Savage"

All help



## SLALEY FILM CLUB



February 16th, 2018

**"The Women on the 6th Floor" (12)**

Supper provided- please pre-order vegetarian option. byo drinks

Slaley Commemoration Hall. All performances start at 7.30pm

Jean-Louis lives a bourgeois existence in Paris with his neurotic socialite wife Suzanne. The couple's world is turned upside-down when they hire a Spanish maid and Jean-Louis is introduced to an alternative reality just a few floors up on the building's sixth floor.

### "The Arts Society Hexham" Formerly NADFAS

On Tuesday 13th February 2018 at 2.00pm in the function room at Hexham Mart.  
The lecture is "Children's Book Illustrators and Illustrations," given by John Erickson.



**Rose and Crown Slaley**

**A friendly and welcoming country pub**

**February Events**

#### **Wednesday 14th February, St Valentine's Day Special**

Enjoy a candlelit dinner for two for £29.95. Steak, chips. sauce and salad, a Rose & Crown cocktail and sharing petit fours dessert.

#### **Friday 16th February**

Celebrate the Chinese New Year  
Special Chinese Menu, full of oriental flavours



#### **Friday 23rd February**

A friendly Darts and Domino rally against the Shire Leek Club. Last year's was great fun – come and join in. All welcome.

For more information or to book your table for any of our events please call in or telephone 01434 673996

**Ladycross Nature Reserve.** *The team at Ladycross Nature Reserve would like to thank everyone who helped support us with the Blue Token Scheme at Tesco. We (and you) raised £1000..*



### **EVENTS AT Minsteracres Retreat Centre**

Details from: [info@minsteracres.org](mailto:info@minsteracres.org) or call 01434 673248

Events in February include:-

**Walking Retreat** 21/02/2018 10:00 am - 5:00 pm

Enjoy a walk of seven to ten miles through the beautiful countryside around Minsteracres, with time for prayer, reflection and sharing of the beauty of creation. You will need suitable walking boots and warm, weatherproof clothing. Please bring a packed lunch.

**Quiet day of reflection during Lent** 28/02/2018 10:00 am - 4:00 pm

An opportunity to step aside during the season of Lent, listen to God in scripture and enjoy the peace and tranquillity of the countryside. – Sr. Rosarie Spence RSM

Light lunch provided. Suggested donation: £20



### **Slaley Red Squirrels**

I am not going to write about squirrels this month, but have a tale of two rabbits.

During the very cold frosty days before Christmas our neighbours had been walking their dogs and had seen a lop eared rabbit sitting near the side of the coal road. They came back in their car with a box and picked it up. It made no attempt to run away. Nearby was evidence of shavings where it had been turned out of a container. The rabbit was taken to their home warmed up fed and looked after.

Two days later my Husband came home from a walk carrying a light tan rabbit with lop ears. Yes, another one. Our cat carrying basket was retrieved from the loft and the rabbit brought inside fed and looked after. Both were lovely rabbits that had been well handled.

How can someone be so cruel to dump these tame dependent creatures out in the cold countryside?

Both were collected by the RSPCA to be re homed  
No more lop eared rabbits have been seen.

## Notes from the Vicarage

One of the most remarkable stories about Jesus is when he's invited to a wedding feast. Unexpectedly, the wine runs out. His mother digs him in the ribs and prompts him to turn roughly 600 litres of water into superb quality wine. The story is rich in symbolism, but the main point is about generosity: God's love is almost recklessly generous.

There's a lot of current research too about the benefits of generosity. Leading academic establishments associated with some of the world's top medical schools take it very seriously because the benefits are measurable and considerable. Generosity, after all, is not just about what you chose to do with your money, but about what you do with your time – which can seem almost as precious; maybe more so.

And so the research indicates, for example, that those who do volunteer work can look forward to a significantly longer life than those who don't. If you serve in Slaley shop, spend hours planning the Show, run one of the groups or organisations in the village, work hard to make the most of the Commemoration Hall, serve on the Parish Council, cut the grass in the churchyard, or get involved in a host of other voluntary activities that take place in and around Slaley (the list is huge), you may not immediately agree that volunteering reduces stress, supports your immune system, gives you an enhanced sense of purpose and even reduces your blood pressure, but there's pretty good evidence to support those claims.

In addition, the extent of our generosity can be shown to be directly linked to our capacity to empathise with other people and to understand their situation. There's even a beneficial hormone that's released when we respond to other people's needs. Order your copy of the newly published Oxford Handbook of Compassion Science and you can read all about it – in great detail.

But the real point of the story about Jesus and the wine is to show that *God* is generous – way beyond the norms of any human pattern of generous service. And coming to terms with that isn't so easy.

There's far less research on what it means to be on the receiving end of generosity than on the significance of being generous ourselves. For example, one writer argues: 'Those of us who have been taught to give without asking for anything in return feel ashamed or embarrassed at being given a hand.'

In our society we have checks and balances to avoid this, so that if I'm invited to dinner, I bring wine and flowers, not just to say 'thank you', but to equal out the debt I feel about being shown generosity. The real challenge remains to accept the limitless love God offers us, but that can make us feel very vulnerable. We place ourselves defenceless in God's arms.

## Ecumenical Study Group

We'll begin again after the Christmas and flu break on Friday 2 March from 10.30 'til noon at the Vicarage. We'll return to the thoughts of the Pope and his thought-provoking letter, 'On Care for Our Common Home' – a study of the climate change and ecology crisis and its meaning for us all. Everyone is welcome. If you'd like to know more, ask Helen.

## Services at St Mary's: Anglicans and Methodists Together

Sunday 4 February	10.30am	Family Service (Helen)
	6pm	Evensong (Helen)
Sunday 11 February	10.30am	Holy Communion (Jenny)
Sunday 18 February	10.30am	Methodist Service
Sunday 25 February	10.30am	Holy Communion (Jenny)
Sunday 4 March	10.30am	Family Service (David)
	6pm	Evensong (Helen)

**Further details of services at St Mary's** and other events throughout the Moorland Group of Churches can be found on our website [www.moorland-group.org.uk](http://www.moorland-group.org.uk)

**Slaley Methodist Chapel** – everyone at the Chapel would like to thank the village for the support and love they shared as we celebrate the final services at the Chapel at the end of November. We had a great day of celebration on 26th November and the Chapel was full for the service of thanksgiving. Special thanks to the WI for the buffet they provided for after the service. We have now begun worshipping together as the Church in Slaley at St Mary's and everyone is welcome at worship each Sunday at 10:30.

## St Elizabeth's Roman Catholic Church, Minsteracres

Sunday Masses - 8.30am & 10.30am  
Weekday & Saturday Mass 8.30am (Chapel)

## Helen's Wine of the Month

I'm so insanely proud of our small (but growing) wine selection in Slaley Community Shop that it seems like a betrayal to recommend something from another retailer. So I won't. Have a peek at my Courant column for the rest, here I'll stick to the best and draw your attention to La Miranda de Secastilla, Garnacha 2015, which is made on the Spanish side of the Pyrenees from a similar mix of grapes to a good Rhône red (i.e. mostly Grenache or as the Spanish prefer, Garnacha, which is entirely fair as it's a Spanish variety originally).

Think Châteauneuf du Pape with masses of ripe red fruit, a hint of herbs and toasty oak, all backed by silky tannins, except it costs less than half the price of a half-way decent Châteauneuf at just £11.75. It's brilliant.