

USEFUL NUMBERS & CONTACTS

Badminton Group	Fran Pugh	673429
Carpet Bowls	Jason & Jeannie Abdelnoor	673651
St Mary's Parish Church	Reverend Helen Savage	676852
St Elizabeth's Catholic Church	Father Jeroen Hoogland	673248
Commemoration Hall	Chairman Ros Doonan Bookings Stella Douglas	673173 673001
Community Trust		
County Councillor	Colin Horncastle	618259
Dial –A-Ride	A.D.A.P.T	600599
Film Club	Jean and Michael Elphick	673443
Friends of Slaley School	Andrea Foster	673865
Hexham Hospital	0344 811 8111	
Ladycross Nature Reserve	Joan Jewitt	673245
Leek Club	Malcolm Goodwin	673408
Local History Group	Pat Wilson Ian Hancock	673388 673502
Mobile Hairdresser	Linda Johnston	673196
Northumberland CC	Report faulty Streetlights/Potholes	03456006400
Parish Council	Chairman Anne Livesey Clerk Pat Wilson	673787 673388
Post Office Van	Martin Nichol Stocksfield Post Office	01661 842110
Police	For non emergency calls	please call 101
Rose & Crown Pub		673996
Slaley Shop	Sandra Innes	673201 673845
Slaley First School	Head, Mrs. Hayward	673220
Slaley Notes in Hexham Courant	Stella Douglas Helen Savage	673001 676852
Slaley Parish Website	www.slaley.org.uk	
Slaley Show Society	Chairman, Marge Rastall	673547
Travellers Rest Pub	Ian and Darren	6732312
Women's Institute	President Margaret Rowell Secretary Hilary Porteus	673589 673637



SLALEY NEWS

OCTOBER 2021



Badminton Club

Slaley Badminton Club delayed starting until October and our first session will now be on Wednesday 13th October at 9.30 am in Slaley Community Hall. We would welcome new players to join us. Contact Fran Pugh tel: 673429



Working with Nature for Nature – Working with Nature for People

Ladycross Nature Reserve

The Fungus Foray is on Saturday 2nd October. We will meet at the quarry gates at 2pm. A small charge is made towards the reserve upkeep - £4 for members, £5 for non members. Please book with Joan on 01434 673245.

A Plea for garden help.

Occasional help needed with heavier jobs in a small garden in Hexhamshire, Contact Joan on 01434 673245

Carpet Bowls in the Commemoration Hall

Bowls Evenings on a Tuesday have been an autumn and winter feature of the village for many years. We made a tentative start at the end of September to make sure we knew how to safely manage the Covid risks. However, now the time has come to see how all the participants feel about continuing with bowls while we have Covid concerns. We will hold bowls sessions on Tuesday 5/10 and 12/10 and then assess what to do in the future. If you are a member or an intending future bowler please come along or give Brian Wilson 673043 a ring to let him know your feelings about bowling in the Hall.

Contributions for November edition by Wednesday 27th October please.

Editors: Jim Bailey 673352 baileyjim128@gmail.com

Fiona McKendrick: 673281 fionamckendrick@googlemail.com

Slaley, Healey & Minsteracres Local History Group

Monday October 25th 2021

This talk will be administered by ZOOM at 7.30 p.m.

If you wish to attend the presentation, please email pat.wilson28@outlook.com with your email address then the ID and Passcode to join the talk will be sent.

Beaufront Castle: A Story in Three Chapters By Steve Watts



Driving from Slaley towards Hexham or Corbridge we see, two miles east of Hexham, Beaufront Castle nestling in the trees to the north. Beaufront Tower was first mentioned in 1415. It was the seat of the Carnabys in the reign of Elizabeth 1. Afterwards it became the residence of the Errington family and a large mansion was built. After the death of John Errington, the present building was erected by William Cuthbert in 1841 from designs by John Dobson.



Slaley Show

The success and future of Slaley Show entirely depends upon **YOU!** Younger people, especially, are needed to become involved – to join the Committee, to take on the role of officers for the show, or simply help on the day. By volunteering to help you can learn the ropes by shadowing

existing secretaries, become assistant secretaries or stewards to help on showday.

By being involved with the show you will not only gain immense pleasure and 'buzz' from knowing that you are part of a long tradition of providing a showcase for peoples skills, from woodworking to vegetable growing, baking to needlecraft, photography to flower arranging and much, much more. Farmers showing their prize sheep, riders competing in the horse and pony classes and owners parading their winning dogs, look to the show, not only to take home prized rosettes, but to meet and support the long held tradition of a local agricultural show. The show encourages involvement from the very young with all the various children's classes and sports, to Young Farmers and all ages beyond.

If you feel that you want to become more involved please phone me on 673547. Slaley Show Society is a vibrant part of our community. Long may it survive.

Marge Rastall, Show Chair

The Slaley Leek Club Flower and Vegetable Show

It had been decided earlier on in the year that the Annual Show put on by Slaley Leek Club in the Commemoration Hall would again be a limited event due to the uncertainty caused by Covid.

The show went ahead on Saturday 11th September with two competitions, the annual leek competition for leek club members and a junior leek competition for youngsters in the village and at Slaley First School.

The earlier date of the show and the good growing weather during the summer helped ensure that there were many good specimens with the first and second place leek entries both having a capacity of over 140 cubic inches.

In the main competition David Innes, took first place for the "Best Stand of Two Leeks" and also the cup for the "Best Leek in Show" with Kevin Doonan a very close second and Pat Goodwin third.

It was great to see the Junior Competition attracting nine entries with Lana Smith taking first prize, Freya Foster second, closely followed by her brother Sebby Foster in third place.

Hopefully, next year we will have returned to some sort of normality and we can revisit the idea of holding a bigger village vegetable and flower show.

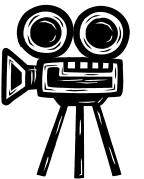
Exercise to Music. Continues on Mondays If any newcomers wish to join us please contact me. Carol Ferguson (673429)



SLALEY FILM CLUB

October 15th 2021

The Station Agent (15)



A sweet and quirky film about a dwarf, a refreshment stand operator and a reclusive artist connecting with one another. The Station Agent is the story of how Peter Dinklage's defiantly isolated character, Fin, becomes the glue in an unlikely trio of friends who have nothing in common but the enjoyment of one another's company.

If you could help in any way, do give us a call or email us. michael@elphicks.myzen.co.uk We might even get to our 20th season ...

October 2021 gardening column- Karen Melvin

The grandchildren asked my husband what was the most exciting thing he had done in his life, expecting something like- climbing Stromboli, or going down a river on a raft in Sumatra to meet a waiting helicopter. But, nothing like that. He said it was digging, by hand, a well at the bottom of the garden. Surprise here all around! Well, the water here is now about a meter lower than when it was dug many years ago; the water table has gone down. (Yorkshire Water is already warning about this.) We don't like to use water on the flower garden in summer, except for seedlings or newly planted things. When we haven't had rain for a month in the summer, I wonder, should I be planting more Mediterranean plants that thrive in the heat, like *Artemisia*, *Salvia*, *Pentstemon*, *Verbena bonariensis*, things that thrive when I give them to my daughter down south living on an arable farm. Then we get rain for days, cold snaps, and all the rest of the unpredictable weather; it is definitely colder up north.



Field edge sunflowers

My daughter's farmland soil copes well with shrubs, roses, hot climate perennials, like bearded irises and grasses, but not so well with some of my favourites, *Lysimachia Clethroides*, *Hemerocallis flava*, *Dicentra oregana* and *Dicentra formosa*. The margins of their large arable fields are planted with "bumble/bird" seed mix. *Crimson clover*, *Phacelia*, *Camelina*, and birds foot trefoil shine out in summer and tall sunflowers are very cheerful along the footpaths around the field headlands. Her husband says crop yields aren't much affected in a large field, as the margins are the least productive areas, often more shaded, and needed for turning machinery. What a pleasure to walk among the flowery edges so full of bees and butterflies.



Nicotiana glauca
White Trumpet

As we have a large veg patch and fewer of us to feed, I am trying for the third time to grow asparagus at one end. Asparagus crowns dry up in rocky soil and rot where it is too moist, so I need some grit in the planting bed. More successfully, I am giving space to cut flowers like cosmos and ever dependable dahlias. I already grow sweet peas each year up a movable support on the veg patch fence. The autumn garden has been very flowery with hot warm colours and the intense cool blue of *Gentiana triflora*. The tall white tobacco spike stands up tall and smells divine. It makes a dramatic spectacle, pale in the low autumn light.

Church Services and News

We worship every Sunday at St Mary's in Slaley at 10.45am. Holy Communion is celebrated on the first Sunday of every month. All are welcome!

On Sunday 10th October we look forward to celebrating harvest

Evensong is at St John's Healey at 5pm on Sunday October 24th

Weekly Sunday services continue to be streamed on Facebook as well as weekly 'thought for the day' each Wednesday. To find them please just click on our Facebook page: <https://www.facebook.com/moorlandgroup/> and via YouTube on our website: www.moorland-group.org.uk

Slaley Parochial Church Council

The PCC next meets on Tuesday 5 October at 7.30pm at the back of church. Amongst other things we'll be discussing our plans for the re-ordering of the church to make it more welcoming and a better resource for the community and also our pattern of services as we continue to emerge from, or at least try to live with Covid. If you'd like an input into our discussions, please do let Helen know.

Messy Church is coming very soon! On Saturday 2nd October at 10am in the churchyard extension – all the exciting activities for the whole family that we had to postpone from earlier in the summer. There'll be lots of fun outdoor activities to do. For more information, please ask Helen: 01434 676852. All are very welcome.

Ecumenical Study Group

We will meet in person on Friday 22nd October at 10.30am at Middle Grange, very kindly hosted by Paula Darrington. We will also try to provide a Zoom link for those who prefer to stay at home. Our aim will be to plan a winter programme, beginning with a series of Advent studies.

Have your say on the future of the church here!

The diocese has invited every parish (or group of parishes) to take part in a 'self-review' process this autumn. We are asked lots of questions about our 'strengths and the areas for development, within the parish. 'This', says the Bishop Berwick, 'will be an important step in helping us to prayerfully discern what God's next steps may be for us in each of our contexts across the diocese.' If you would like to be part of a group to work on all this, please have a word with Helen (01434 676852 or email helensavage1@gmail.com)

Any more views from the Vicarage?

The editors rightly, I think, suggest that the first duty of Slaley News is to bring you news rather than opinion. Although I love the sound of my own voice(!), you can easily listen in via the links listed above, or if you wish to be on the church's twice weekly emailing, please do let me know. We'll continue to bring you all the main items of harder church news here each month as usual.

Become a Friend of St John's Healey

St John's is gem of building (do go and visit it if you've never done so) loved by many people in the community and beyond for a variety of reasons, but especially its quiet stillness, its superb windows and its Romanesque Revival architecture.

Sadly, love alone won't look after the fabric and upkeep of this beautiful old building and its churchyard. So, to help give it a secure future, we'd like to invite you to become a 'Friend of Healey Church'. For a modest annual donation (the amount is up to you, but we suggest £25), you'll be able to enjoy advance notice of our concert and events programme, interesting mail-outs, private views, a drinks party every summer and, of course, the knowledge that you're helping to keep this lovely place in good shape for generations to come.

If you'd like to become a Friend, please get in touch at thehotspur@gmail.com

Healey Church Weekend - Torn Photos - Karen Melvin

**Opening 6:30PM 8th October & 11AM-5PM
9th-10th October**

An art exhibition will launch the Friends of Healey Church on Friday evening October 8th at 6:30. St John's at Healey is a small church held in great affection by many, who have attended services, married, been baptised, enjoyed concerts and art exhibitions, admired its quiet stillness, its windows and Romanesque Revival architecture. We hope to have regular events in the church to help secure its future. This exhibition features photographs taken along the Devil's Water to the coast in 1996, which have been torn and further altered with recent drawing. All welcome.



Slaley weather report

August was very changeable right to the end of the month, with the monthly rainfall totalling 43.7mm. So far, September has been much

drier with a total rainfall of only 14.4mm. With the equinox tomorrow, the pattern of relatively high pressure throughout much of the month is likely to change. The blocking high pressure cells don't always bring sunshine, and so far this month, we've had plenty of grey days.

We may be enjoying a calm spell with more sunshine at the moment, but wet and windy conditions are forecast with winds coming from the north-west. Autumn definitely seems to be round the corner.

Olwen Savage

Rose and Crown Quoits Team News

The quoits season came to close on the 5th September with Finals Day at the Wallace Arms.

After a closely fought season the Rose & Crown team finished runners up for the second successive year, well played to all team members.

Kevin Barber won the singles knock out competition, we were beaten in the final of the charity shield and Kevin Barber & Rory McNeil were runners up in the final of the doubles competition. The team was very happy, especially the new recruits who settled in really well.

Hexham Arts Society Tuesday October 12th 2021 at 7.30 pm in the Function Room at Hexham Mart.

The Honourable and Dishonourable Art of Acting. – Macolm Jones



Minsteracres Retreat Centre is thrilled to announce the launch of its new website, Minsteracres Retreat Centre - A Spiritual Place Providing Hospitality & Spiritual Wellbeing .

Our intention is to make the website easier to navigate and more visually engaging, keeping you informed and connected at all times. The site features a completely new layout and images to showcase our hospitality and retreat programme.

Geoff Bockett the Director of Minsteracres "I want to say how much I like the new design created by TWDA Creative Services. It conveys a sense of space and peacefulness that I hope will encourage more people to come and experience the beauty and hospitality we have on offer at Minsteracres."

Minsteracres Retreat Centre is a Christian place of prayer with a resident community of Roman Catholic Passionist priests and lay people. We welcome people who share our values and we invite you to enjoy our hospitality, food and accommodation

Why Volunteer?

Improving health and wellbeing and support your community at the same time. One of the reasons we all enjoy Slaley so much are the institutions such as the pub, the shop and the film club that make our community just that, a community. All those things that we hold dear need people to give their time to support them.



Some need significant commitment whilst others just require an hour or so here and there. Often, it's that fear of commitment that stops us volunteering. But perhaps when saying "It will take up too much of my time" we overlook the personal health benefits volunteering can offer.

We may not consider our wellbeing when thinking about donating time to support a village club or institution, but according to the National Council for Voluntary Organisations it should be recognised as a definite advantage. In 2018 the organisation explored the impact of volunteering on the mental health, wellbeing, physical health, social connections, employability and skills of volunteers. After analysing global academic studies and government volunteering initiatives, it concluded: "There is now a solid body of evidence demonstrating that volunteering is related to reduced increases in depression and greater feelings of mental wellbeing."

We are fortunate for now to have a myriad of volunteering opportunities in Slaley each able to contribute to our mental health and wellbeing. Why not get involved in one that matters to you, reap those benefits

Artisan Market



Many people came to our first Artisan Market in July to find that we were sold out, we intend that our second Market on October 27th will not be a disappointment to late shoppers. The Market like all other events is subject to the stallholders being free of COVID and able to take part.

We have organic fruit & vegetables, eggs, home-made soups etc from **Wilde Farm Ponteland** – check out their web site.

Castle Hams are providing a selection of meats from the pig – a little bird told me that they purchase rare breeds very locally.

Kick Ass Cheese returns with his selection of Artisan flavours.

Charlotte Douglas is selling flowers under her trading name of Twisted Willow.

Artisan breads by Bread and Roses of Alnwick – you may have bought his breads on Hexham Farmers Market – if you have a special bread you want make sure it is there for you at Slaley by ordering it in advance from his web site. There are more stalls including a very well-known meat supplier. For a full list of stallholders watch the web site.

Margaret and her team will be serving refreshments from 2 p.m.

Finally, **Fire & Dough Pizza Van** will be trading in the car park from 5 p.m. Again to pre-order your Pizza tel: 07732 019187 for a collection time to suit you.



We hope that everyone has enjoyed the new freedoms that have come in the summer months. The shop has been busy and people have enjoyed ice creams and coffees in the garden. The recycling shed is thriving and we would encourage people to bring their cheese wrappers, blister packs, stamps and batteries

to start their new journey from Slaley. In keeping with our environmental ethos our delicious yoghurt now comes in a cardboard recyclable tub.

You will notice some changes when you visit the shop. We have a new display to show off our wonderful range of cards, many of which are from producers in the county. We have repurposed the cabinet and hope to use it to display products and entice people into the back of the shop where we now have the shop and community notice boards. If you are needing a babysitter or some hay bales, this is the place to look! By the time this goes to print I hope that our new shop sign will be fitted giving us a much needed face lift.

We are always looking to diversify our range of produce with many of you snapping up the delicious Peter's Yard crackers which came with our last Suma order.

Our AGM is being held on the 29th September in the Hall. We are hoping that new directors will join the board and will always welcome new recruits to our band of volunteers. The most visible role in the shop is of course working behind the till, but there are many other roles that contribute to the smooth running of the shop. We've plans for new ranges that need product owners. Some jobs can be done from home or at a time that suits you, such as helping with ordering, stock taking, cashing up, book keeping and support with the rota. Please get in touch with one of us if you would like to discuss ideas.

Fiona McKendrick: 673281 fionamckendrick@googlemail.com

Slaley, Healey & Hexhamshire Community Environmental Group

It was reported at the September meeting that the grasscutter had picked off an apple from the orchard trees at Parks Side, had one bite of and threw it onto the ground – I think he probably tried one of the Keswick Codling cooking apples. The three eating apples are the James Grieve variety. Sheila is going to ask the residents at Parks Side if there is another variety they would like to try. Stella and Terry will store the remainder until our October market when they will be offered for sale to raise money for future fruit trees in our mini orchard. If anyone has a spare field corner we would be happy to consider a long or short term lease to extend the community orchard.

Parish Council Notes

The Parish Council met 13th September at Slaley Commemoration Hall. Initial discussion was about the problem of there being few people engaged in parish activities, so Parish Councillors who are also active volunteers often had to declare an interest and business was difficult to enact at times. A small working group will tackle the problem of a pool of volunteers but meanwhile if you have a specific need for a volunteer which the PC could publicise, please contact the Parish Clerk.

There is increasing interest in ensuring that Slaley Parish has a green agenda and how that might be managed. Links on the Parish website provide greater detail: see particularly the Local Climate Action Plan.

County Councillor Horncastle was present and provided considerable detail about the NCC budget – too much detail for the Slaley News so please visit the website for the details.



Sycamore Counselling Service, Hexham – The COVID-19 pandemic has impacted us in ways that we would not have expected. Our lives have changed considerably and the past months have presented many challenges for us all. We are a charity running a counselling service that see clients face to face, on Zoom and by telephone - and our professionally qualified counsellors would be happy to support you towards better mental wellbeing.

We cover areas such as anxiety, depression, bereavement, stress, and many others.

We offer a donations-based service in the hope that excellent counselling will be available to all.

Please visit our website www.sycamorecounselling.com or our Facebook page [@sycamorecounsellingservicehexham](https://www.facebook.com/sycamorecounsellingservicehexham) or call 07939 49 30 30 to find out more about us, or to make an initial appointment.

Jenny Tabori – Manager. Charity No: 1179039

Selected diary dates

Mondays – Exercise to music

Tuesdays – Bowls night

Wednesdays – Badminton, first session 13/10/21

Saturday 02/10/21 Ladycross Nature Reserve The Fungus Foray

Saturday 02/10/21 Messy Church

Tuesday 05/10/21 Parochial Church Council meeting

Friday 08/10/21 Healey Church Weekend Exhibition

Sunday 10/10/21 Harvest Festival

Tuesday 12/10/21 Hexham Arts Society meeting

Friday 15/10/21 Film Club

Friday 22/10/21 Ecumenical Study Group

Monday 25/10/21 History Club Zoom meeting

Wednesday 27/10 Artisan Market and
Fire & Dough Pizza Van

Times and details can be found inside the news. If in doubt as to the accuracy please check with the relevant organisers.

Rant of the month



If people can take the time to bag up their waste and load it into their vehicle why don't they take it to the tip?

If it is because the Council make them pay then the Council should have a rethink. If this was on the roadside they would have to clear it up at tax payers expense. On private property the owner has to pay!